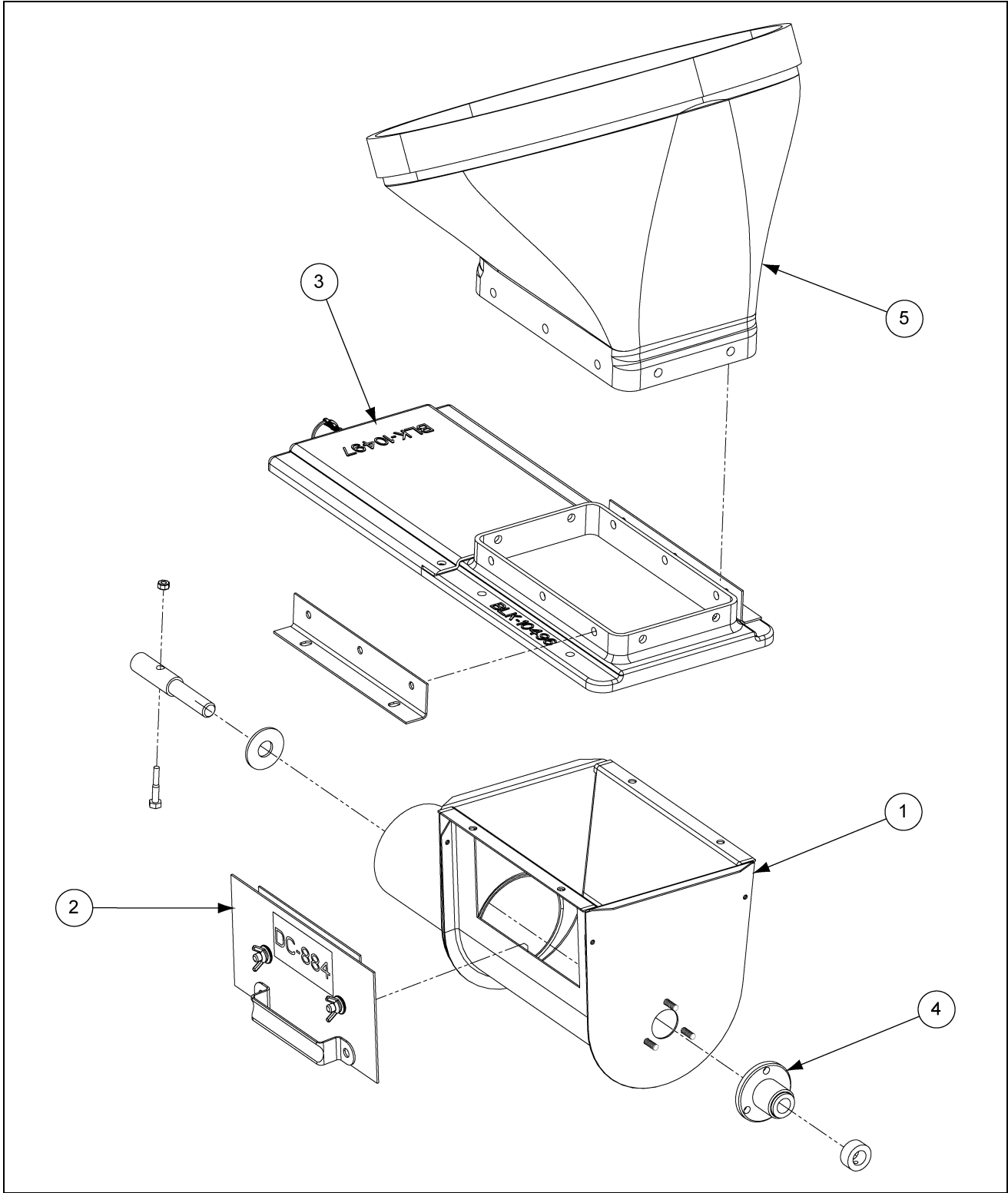





1004 East Illinois Street • Assumption, IL 62510 • 217-226-4421

## 4" and 6" Rigid Unloader Instructions



Date: 01-22-09

Printed in the U.S.A.  
Copyright © 2009 by  Group  
www.gsiag.com



PNEG-055  
Page 1 of 6

## 4" and 6" Rigid Unloaders

| <b>RA-3036 (4" Rigid Auger Unloader w/ Stub Shaft and Bearing)</b> |               |                                     |
|--|---------------|-------------------------------------|
| <b>Ref #</b>   | <b>Part #</b> | <b>Description</b>                  |
| 1  | RA-3027       | 4" Rigid Unloader Body Weldment     |
| 2  | FLX-4239      | Clean-out Plate Assembly            |
| 3  | BLK-11137A    | Transfer and Slide Gate Assembly    |
| 4  | RA-3071       | 4" and 6" Auger Stub Shaft Assembly |
| 5  | FLX-2194      | 16" 30° Black Plastic Boot          |
| 5  | FLX-2194C     | 16" 30° Clear Plastic Boot          |
| N/S  | FLX-2195      | 16" Straight Black Plastic Boot     |
| N/S  | FLX-2195C     | 16" Straight Clear Plastic Boot     |
| N/S  | FLX-4456      | Unloader Hardware Package           |

| <b>RA-3037 (6" Rigid Auger Unloader w/ Stub Shaft and Bearing, 13/16" Stub Shaft to be used with 13/16" I.D. Auger Shaft)</b> |               |                                     |
|---|---------------|-------------------------------------|
| <b>Ref #</b>  | <b>Part #</b> | <b>Description</b>                  |
| 1   | RA-3030       | 6" Rigid Unloader Body Weldment     |
| 2   | FLX-4239      | Clean-out Plate Assembly            |
| 3   | BLK-11137A    | Transfer and Slide Gate Assembly    |
| 4   | RA-3071       | 4" and 6" Auger Stub Shaft Assembly |
| 5   | FLX-2194      | 16" 30° Black Plastic Boot          |
| 5   | FLX-2194C     | 16" 30° Clear Plastic Boot          |
| N/S   | FLX-2195      | 16" Straight Black Plastic Boot     |
| N/S   | FLX-2195C     | 16" Straight Clear Plastic Boot     |
| N/S   | FLX-4456      | Unloader Hardware Package           |

| <b>RA-30371 (6" Rigid Auger Unloader w/ Stub Shaft and Bearing, 1" to 5/8" Stub to be Used with 1" I.D. Auger Shaft)</b> |               |                                  |
|--|---------------|----------------------------------|
| <b>Ref #</b>   | <b>Part #</b> | <b>Description</b>               |
| 1  | RA-3030       | 6" Rigid Unloader Body Weldment  |
| 2  | FLX-4239      | Clean-out Plate Assembly         |
| 3  | BLK-11137A    | Transfer and Slide Gate Assembly |
| 4  | RA-30711      | 6" Auger Stub Shaft Assembly, 1" |
| 5  | FLX-2194      | 16" 30° Black Plastic Boot       |
| 5  | FLX-2194C     | 16" 30° Clear Plastic Boot       |
| N/S  | FLX-2195      | 16" Straight Black Plastic Boot  |
| N/S  | FLX-2195C     | 16" Straight Clear Plastic Boot  |
| N/S  | FLX-4456      | Unloader Hardware Package        |

## Bearing and Washer Detail

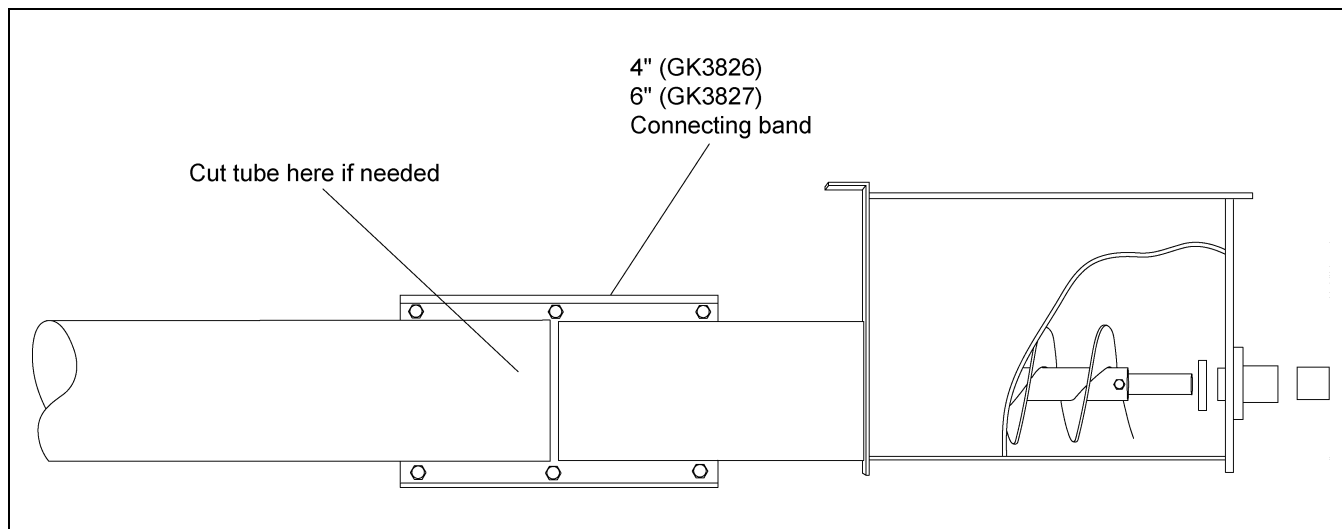


Figure 1

Install supplied stub shaft inside auger flight with 1/4" x 1-1/2" bolt and a 1/4" lock nut. Position flight with stub shaft and washer into unloader bearing. (See Figure 1.)

4" Unloaders require 17" of exposed flight. 6" Units require 20". It is necessary to field cut auger tube lengths to accommodate required exposure. Butt the auger tube to the unloader tube and attach using a connecting band.

**IMPORTANT:** *Auger stub shaft supplied is designed to fit GSI 4" and 6" bulk tank augers. If using a different auger supplier it may be necessary to modify or fabricate a stub shaft for the unloader bearing.*

# 4" and 6" Rigid Unloaders



**Improper installation methods of the hardware may cause permanent damage and possible breakage of the boot.**

## Boot and Transfer Plate Installation

**NOTE:** Installation of the boot is the same whether the tank has the standard collar or the Sure-Flo Feed Flow Control.

Slide the boot as far as possible into the tank collar or the Sure-Flo Feed Flow Control opening. (See Figure 2.) Align the boot with the Flex-Flo System that will be installed. Using the holes in the collars for guides, drill eight (8) 11/32" holes into the boot rim. (See Figure 3.)

Mount the boot to the collar with the hardware provided. Bolt the Transfer Plate and Unloader Braces to the Boot as shown. See Figure 4 for proper usage and assembly direction of hardware for mounting the boot and the Transfer Plate. All connections should be tightened until they are "snug".

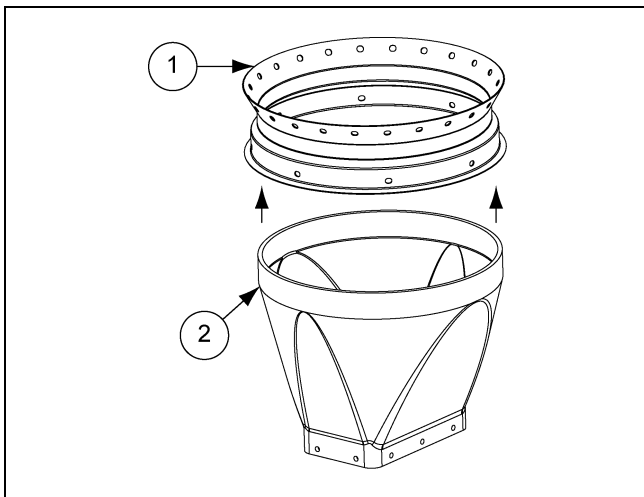


Figure 2

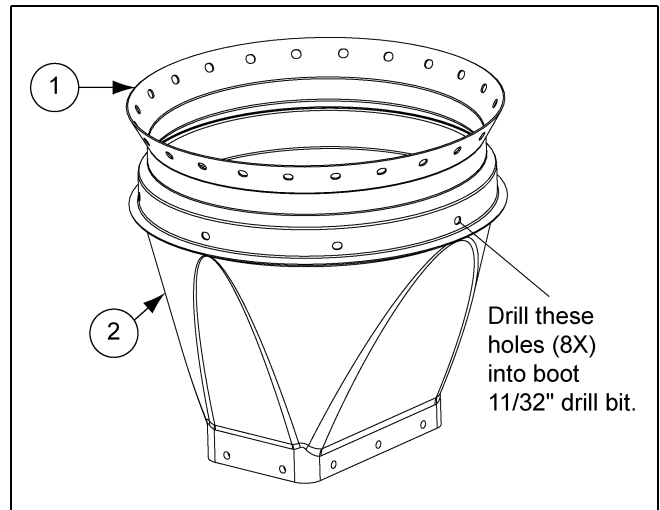


Figure 3

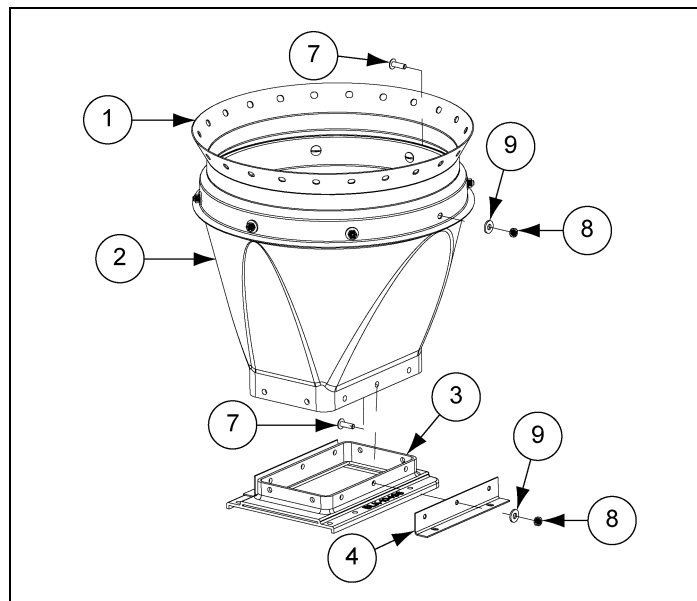


Figure 4

## Slide Gate Installation

Insert the slide into the transfer plate. The slide must be in its operating position prior to attaching the slide shield to the transfer plate. Use two (2) 5/16"-18 x 1" truss head tap bolts to mount the slide shield. (See Figure 5.)

Bolt unloader to transfer plate/unloader brace assembly as shown in Figure 6. Note orientation of these bolts. (See Figure 6.)

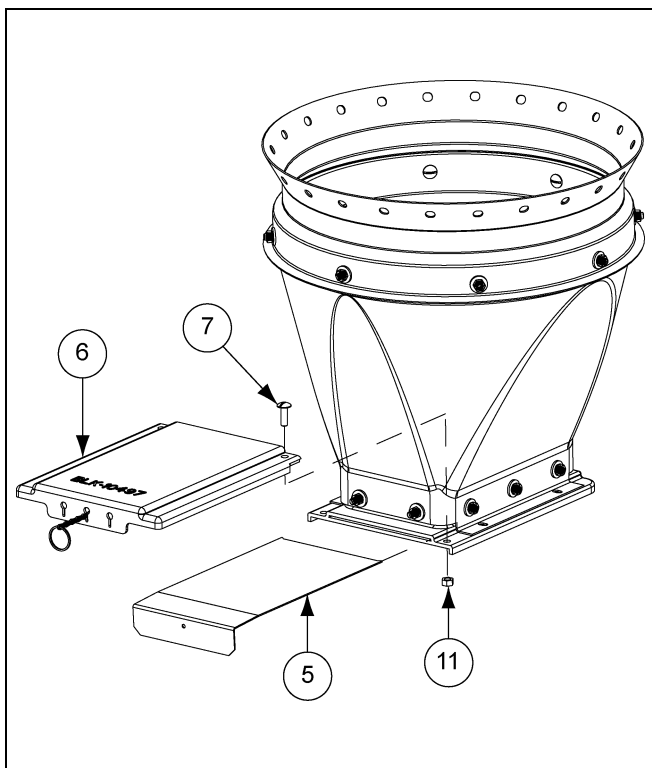


Figure 5

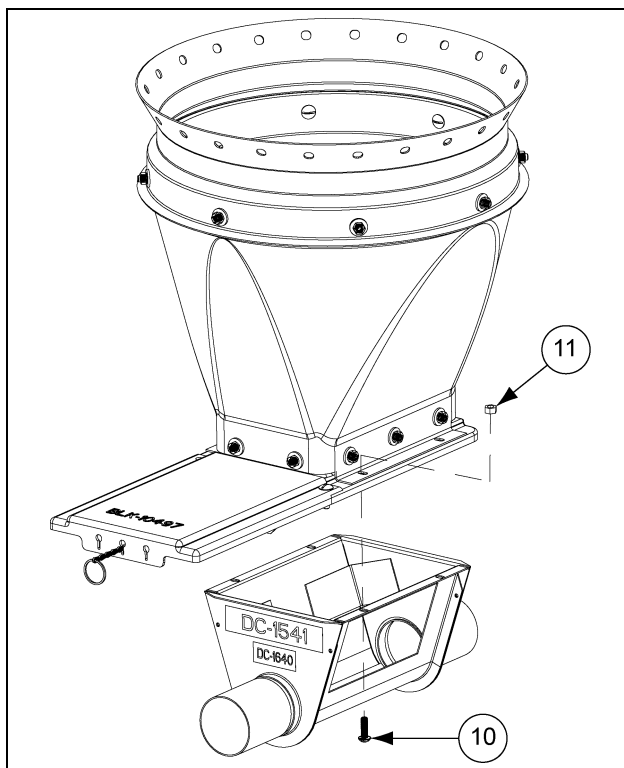


Figure 6

| Ref # | Part #    | Description                            |
|-------|-----------|--|
| 1     | BLK-10488 | 16" 67° 16" Hopper Collar (24 Holes)   |
| 1     | BLK-10489 | 16" 60° Hopper Collar (24 Holes)       |
| 1     | BLK-11463 | 16" 60° Hopper Collar (27 Holes)       |
| 1     | BLK-12342 | 16" 60° Hopper Collar (18 Holes)       |
| 2     | FLX-2194  | 16" 30° Black Plastic Boot             |
| 2     | FLX-2194C | 16" 30° Clear Plastic Boot             |
| 2     | FLX-2195  | 16" Straight Black Plastic Boot        |
| 2     | FLX-2195C | 16" Straight Clear Plastic Boot        |
| 2     | FLX-4869  | 16" Double Straight Black Plastic Boot |
| 3     | BLK-10496 | Transfer Plate                         |
| 4     | FLX-4819  | Unloader Brace                         |
| 5     | FLX-4782  | Slide Gate                             |
| 6     | BLK-10497 | Slide Gate Shield                      |
| 7     | S-4336    | 5/16" x 1" Truss Head Machine Screw    |
| 8     | S-4337    | 5/16"-18 Nylon Nut                     |
| 9     | S-4338    | 5/16" Nylon Washer                     |
| 10    | S-8328    | Screw MS 5/16"-18 x 1" RHS ZN Grade 2  |
| 11    | S-396     | Hex Nut 5/16"-18 YDP Grade 2           |

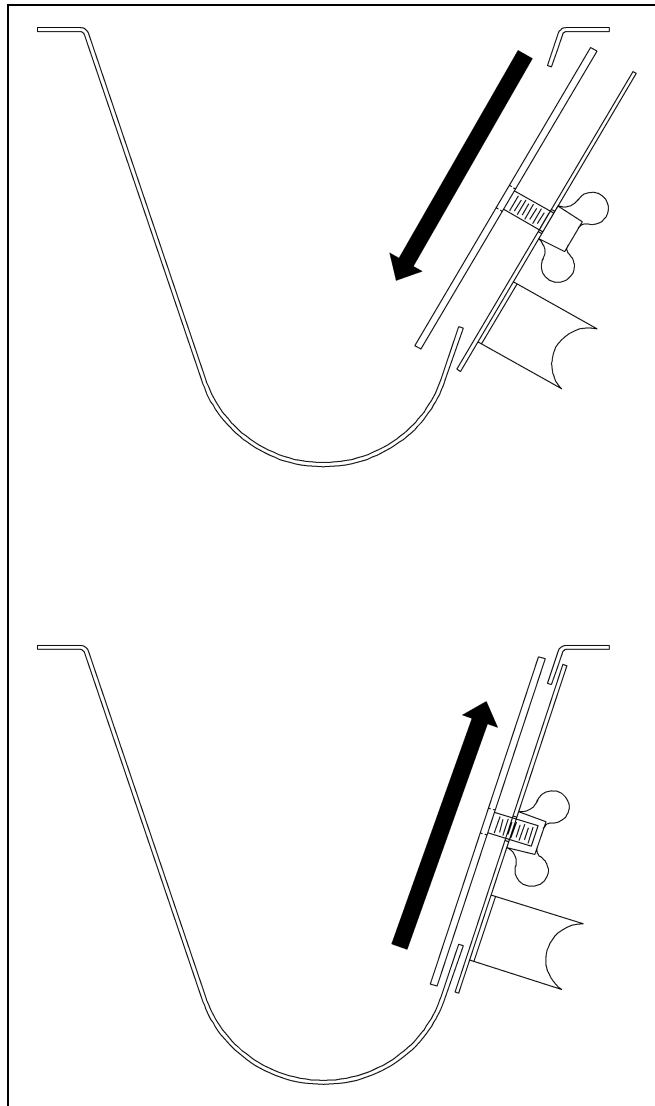
## 4" and 6" Rigid Unloaders

### Inspection/Clean-out Plate Installation

Once the installation of the auger tubes and auger is complete, insert the inspection/clean-out plate or the optional unloader switch.

The inspection/clean-out plate is to be installed per the following instructions ([See Figure 7](#)):

1. Back off both wing nuts to the stud ends.
2. Slide the plate onto the lower side of the unloader opening.
3. Move the plate first against the side of the unloader then upward toward the top of the unloader.
4. Tighten the wing nuts while holding the plate steady.



**Figure 7** *Clean-out Plate Installation*